



THE EMORY

LONDON

Old Barrack Yard, Belgravia, London, SW1X 7NP

T +44 (0)20 7862 5200

the-emory.co.uk

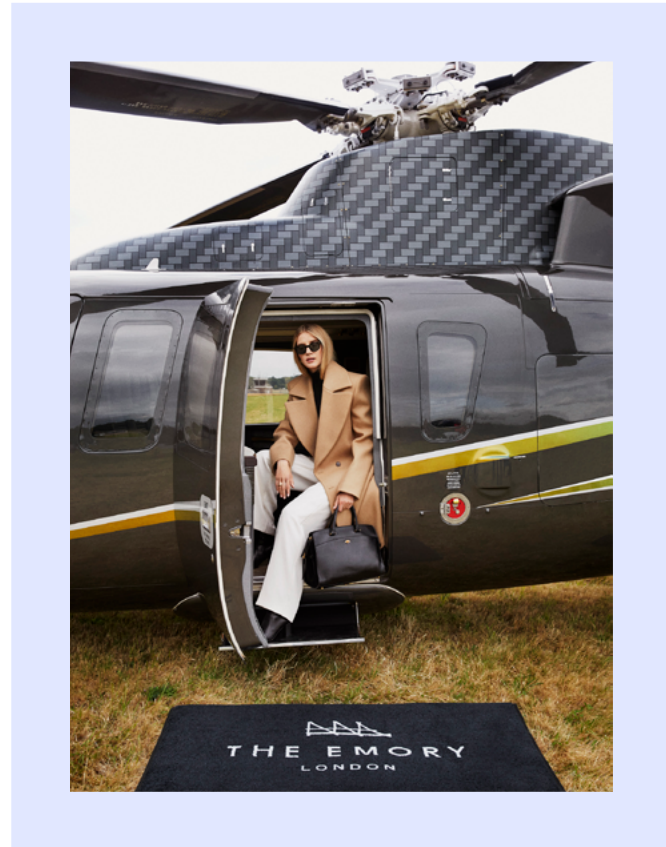
THE EMORY

Maybourne's modern masterpiece hotel in Belgravia, The Emory is situated on a discreet and secluded laneway overlooking Hyde Park. Each of its 61 suites, including the top floor Penthouse, features elegant modernist interiors by a collection of the world's leading designers

OUR SIGNATURE PROPOSITION

Every Stay Includes:

- Return airport transfer in The Emory fleet from selected private airfields and airports, and all London Terminals
- Helicopter one-way transfer from selected airfields and private jet terminals (for bookings in a Corner Park Suite and above, subject to availability at time of booking)
- Daily English breakfast served in-suite or at Jean-Georges' abc kitchens
- Complimentary membership to Surrene wellbeing club for the duration of your stay
- In-suite bar stocked with seasonal tipples and nibbles
- Personalised services provided by your Emory Assistant
- Unpacking and pressing service on arrival
- Use of the house car (subject to availability)



SUITES AT THE EMORY

The Emory Penthouse

- Occupying the entirety of our top floor and with thoughtful and contemporary interiors throughout, The Emory Penthouse has been designed by architects Rigby & Rigby
- Three large terrace spaces offer sweeping views of the city and Hyde Park
- The suite includes a separate dining area, with a dining table for 8 people, and a private multi-purpose fitness space
- Sleeps up to 4 people, 300 sq m / 3,229 sq ft

The Emory Park Suite

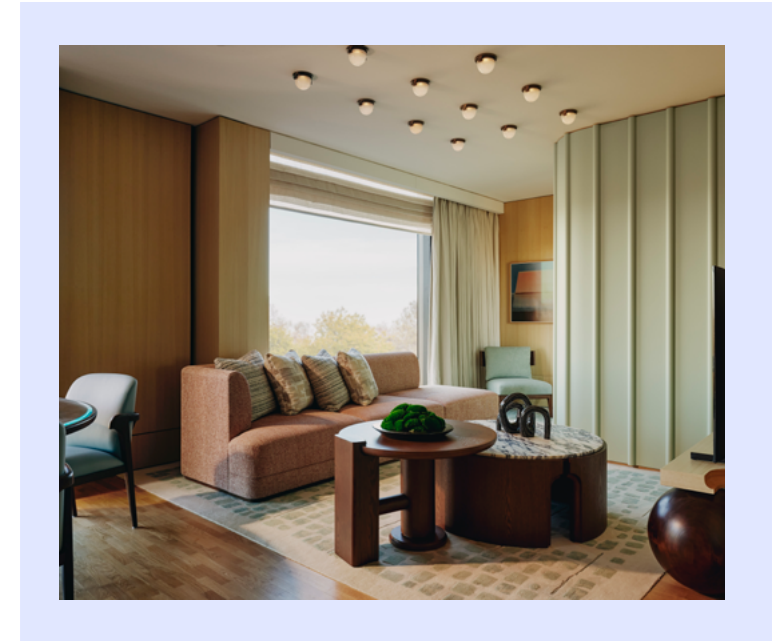
- A singularly elegant and expansive space, The Emory Park Suite has been designed by world-renowned designer André Fu
- Floor-to-ceiling windows and a private balcony promise sweeping views of Hyde Park and the red-bricked streets surrounding it
- Sleeps up to 4 people , 200 sq m / 2,153 sq ft
- Two connecting options are available on request, to create a four-bed suite

Hyde Park Balcony Suite

- Featuring contemporary interiors throughout by world-leading designers André Fu and Alexandra Champalimaud, the Hyde Park Balcony Suite also offers views of Hyde Park from its intimate private balcony
- Sleeps up to 2 people, 105 sq m / 1,130 sq ft

Corner Park Suites

- Calm, spacious and inviting, the Corner Park Suites feature elegantly restrained interiors from four global designers and creatives: Pierre Yves Rochon, André Fu, Alexandra Champalimaud and Patricia Urquiola
- Sleeps up to 2 people, 75 sq m / 807 sq ft



The Emory Park Suite



The Emory Penthouse

SUITES AT THE EMORY

Deluxe Park Junior Suites

- A calming retreat from the haste and hassle of the city outside, sweeping views of Hyde Park – and exceptional contemporary interiors by visionary designers Patricia Urquiola, Pierre Yves Rochon and André Fu
- Sleeps up to 2 people, 55 sq m / 592 sq ft

Balcony Park Suites

- Our light-filled and spacious Balcony Park Suites feature elegantly restrained interiors by acclaimed designers André Fu, Pierre-Yves Rochon and Patricia Urquiola
- Sleeps up to 2 people, 65 sq m / 700 sq ft



Deluxe Courtyard Junior Suite

Courtyard Junior Suite

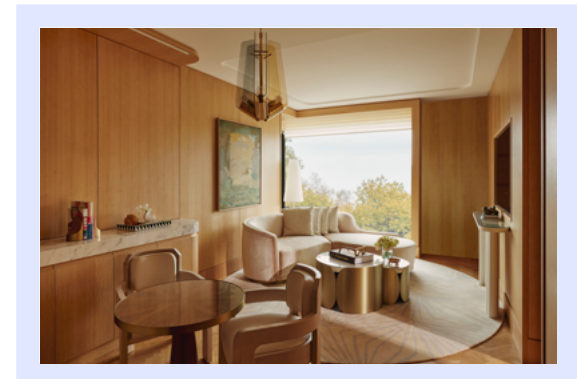
- Elegant and considered in every detail, the Courtyard Junior Suites feature interiors by renowned designers Pierre-Yves Rochon, André Fu, Alexandra Champalimaud and Patricia Urquiola
- Sleeps up to 2 people, 55 sq m / 592 sq ft

Deluxe Courtyard Junior Suite

- Expansive and considered spaces, offering light-filled courtyard views, the Deluxe Courtyard Junior Suites feature exceptional interiors from world-leading designers Alexandra Champalimaud, Patricia Urquiola, Pierre Yves Rochon and André Fu
- Sleeps up to 2 people, 55 sq m / 592 sq ft

Park Junior Suites

- A haven of quietude, each Park Junior Suite features contemporary interiors by world-renowned designers Pierre-Yves Rochon, André Fu and Patricia Urquiola
- Sleeps up to 2 people, 55 sq m / 592 sq ft

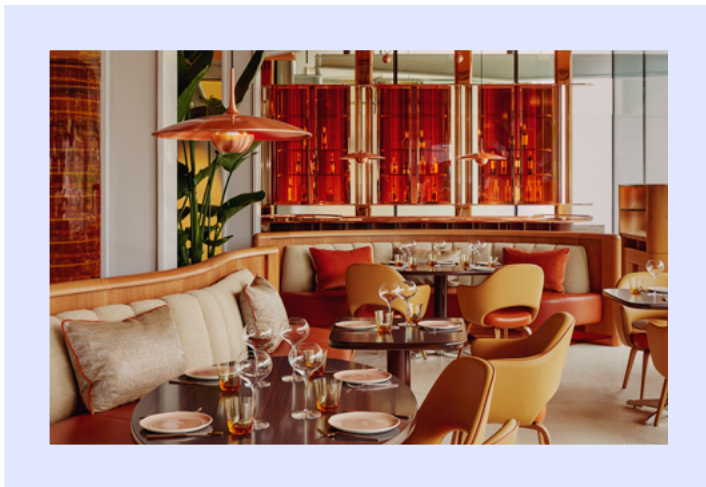


Corner Park Suite

HOTEL FACILITIES

abc kitchens

- Designed by Rémi Tessier and featuring artworks by Damien Hirst, abc kitchens at The Emory brings Chef Jean-Georges Vongerichten's acclaimed abc brand to the UK for the very first time
- Vibrant, approachable and contemporary, the restaurant's glass facade promises views of Hyde Park and Knightsbridge
- The menu brings together delicious elements from a trio of Jean-Georges' New York locations — abc kitchen, abcV and abc cocina
- The courtyard features a stunning stained glass piece by acclaimed artist, Brian Clarke, and the bar boasts mid-century inspired décor in a warm, inviting palette



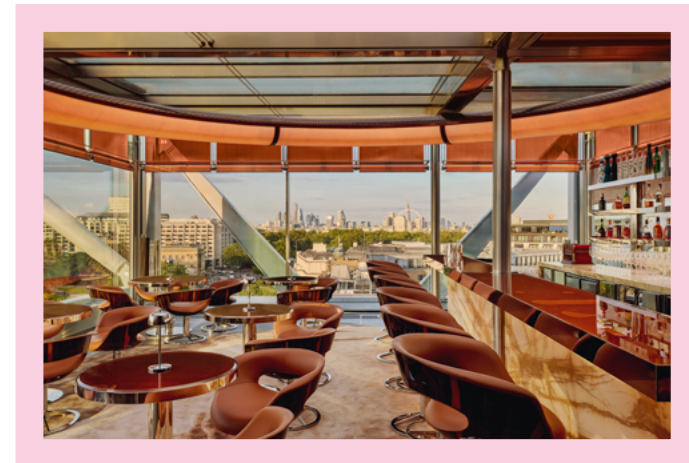
abc kitchens

The Emory Cigar Merchants

- An intimate rooftop destination open exclusively to hotel residents and their guests, The Emory Cigar Merchants is the perfect place to enjoy a relaxing drink, high above the capital
- Home to a fine collection of cigars and complete with an advanced extraction system, the interiors are the work of acclaimed designer, Rémi Tessier

The Emory Rooftop Bar

- Designed by Rémi Tessier, the bar offers striking décor and panoramic views of London's skyline await, alongside a selection of exceptionally distilled spirits, and a refined menu of light dishes.



The Emory Rooftop Bar

HOTEL FACILITIES

Surrenne Belgravia

- A new paradigm of wellbeing and longevity, Surrenne is one of the largest health, fitness and beauty destinations in London
- Spread over 4 floors of our private Members' Club in Belgravia, it features a 22m pool, sauna, spa and treatment rooms, a state-of-the-art gym, as well as a pioneering Longevity Suite and Tracy Anderson Studio
- Crafted in collaboration with leading pioneers in wellness and longevity, every Surrenne experience is enriched by the collective expertise of visionaries such as Tracy Anderson, Dr. Lara Devgan, and Rosemary Ferguson. Together, they shape a holistic approach to well-being, ensuring that every element of the experience nurtures both body and mind

Surrenne Fitness

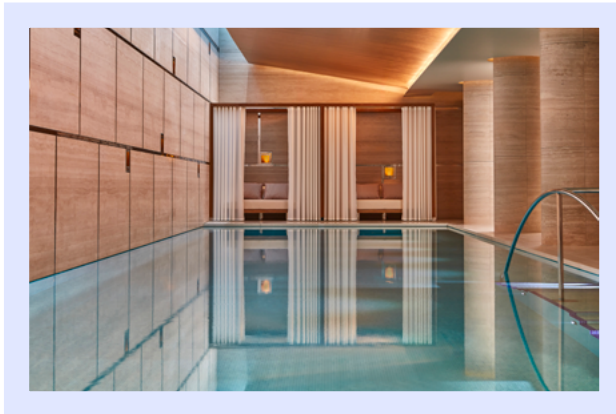
- A seamless fusion of sophisticated design and state-of-the-art equipment awaits. Curated for the discerning enthusiast, Surrenne focuses on core strength and holistic wellness, resulting in peak performance and ultimate fitness optimisation

Surrenne Café

- With a menu curated by nutritionist Rose Ferguson, Surrenne Café provides a haven of relaxation to enjoy a healthy bite, smoothie or juice



Tracy Anderson Studio



Pool



Couple's Treatment Room