



THE EMORY

LONDON

Old Barrack Yard, Belgravia, London, SW1X 7NP

T +44 (0)20 7862 5200

the-emory.co.uk

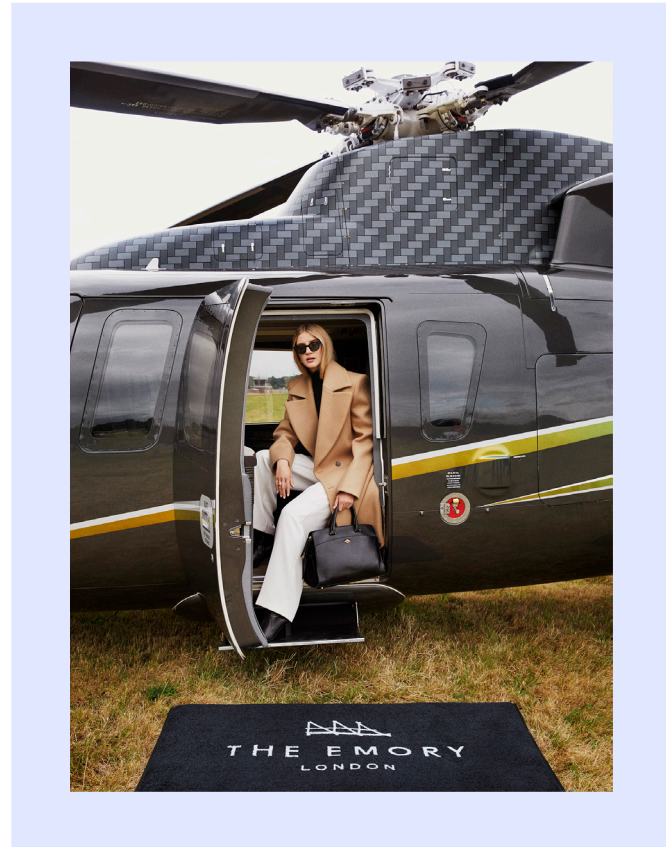
THE EMORY

London's first all-suite hotel, The Emory is situated on a discreet and secluded laneway overlooking Hyde Park. Each of its 61 suites, including the top floor Penthouse, features elegant modernist interiors by a collection of the world's leading designers

OUR SIGNATURE PROPOSITION

The Emory Standard - a rate which includes :

- Return airport transfer in The Emory fleet from selected private airfields and airports, and all London Terminals
- Helicopter one-way transfer from selected airfields and private jet terminals (for bookings in a Corner Park Suite and above, subject to availability at time of booking)
- Daily English breakfast served in-suite or at Jean-Georges' abc kitchens
- Complimentary membership to Surrene wellbeing club for the duration of your stay
- In-suite bar stocked with seasonal tipples and nibbles
- Personalised services provided by your Emory Assistant
- Unpacking and pressing service on arrival
- Use of the house car (subject to availability)



SUITES AT THE EMORY

The Emory Penthouse

- Occupying the entirety of our top floor and with thoughtful and contemporary interiors throughout, The Emory Penthouse has been designed by architects Rigby & Rigby
- Three large terrace spaces offer sweeping views of the city and Hyde Park
- The suite includes a separate dining area, with a dining table for 8 people, and a private multi-purpose fitness space
- Sleeps up to 4 people, 300 sq m / 3,229 sq ft

The Emory Park Suite

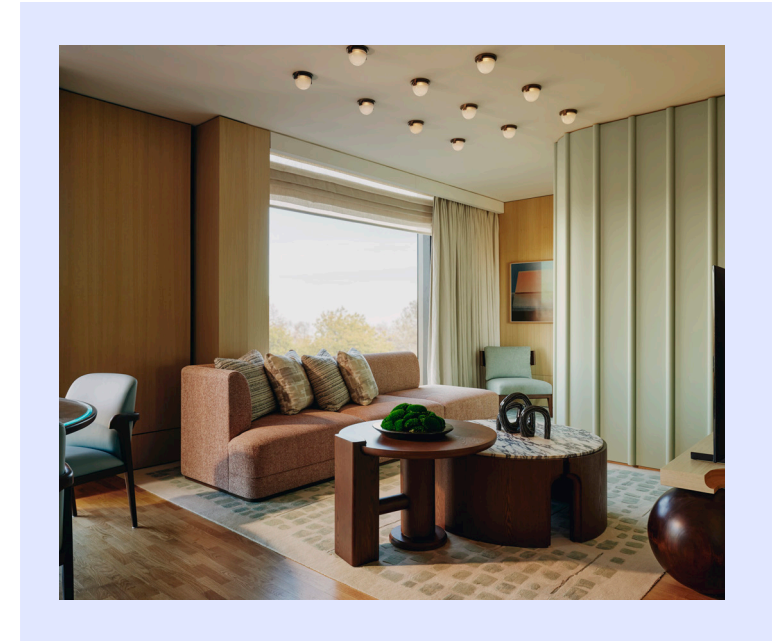
- A singularly elegant and expansive space, The Emory Park Suite has been designed by world-renowned designer André Fu
- Floor-to-ceiling windows and a private balcony promise sweeping views of Hyde Park and the red-bricked streets surrounding it
- Sleeps up to 4 people , 200 sq m / 2,153 sq ft
- Two connecting options are available on request, to create a four-bed suite

Hyde Park Balcony Suite

- Featuring contemporary interiors throughout by world-leading designers André Fu and Alexandra Champalimaud, the Hyde Park Balcony Suite also offers views of Hyde Park from its intimate private balcony
- Sleeps up to 2 people, 105 sq m / 1,130 sq ft

Corner Park Suites

- Calm, spacious and inviting, the Corner Park Suites feature elegantly restrained interiors from four global designers and creatives: Pierre Yves Rochon, André Fu, Alexandra Champalimaud and Patricia Urquiola
- Sleeps up to 2 people, 75 sq m / 807 sq ft



The Emory Park Suite



The Emory Penthouse

SUITES AT THE EMORY

Deluxe Park Junior Suites

- A calming retreat from the haste and hassle of the city outside, sweeping views of Hyde Park – and exceptional contemporary interiors by visionary designers Patricia Urquiola, Pierre Yves Rochon and André Fu
- Sleeps up to 2 people, 55 sq m / 592 sq ft

Balcony Park Suites

- Our light-filled and spacious Balcony Park Suites feature elegantly restrained interiors by acclaimed designers André Fu, Pierre-Yves Rochon and Patricia Urquiola
- Sleeps up to 2 people, 65 sq m / 700 sq ft



Deluxe Courtyard Junior Suite

Courtyard Junior Suite

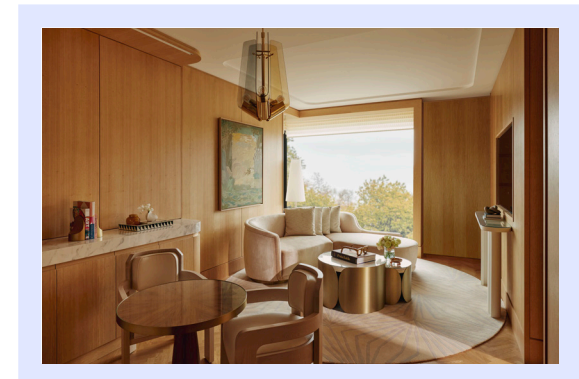
- Elegant and considered in every detail, the Courtyard Junior Suites feature interiors by renowned designers Pierre-Yves Rochon, André Fu, Alexandra Champalimaud and Patricia Urquiola
- Sleeps up to 2 people, 55 sq m / 592 sq ft

Deluxe Courtyard Junior Suite

- Expansive and considered spaces, offering light-filled courtyard views, the Deluxe Courtyard Junior Suites feature exceptional interiors from world-leading designers Alexandra Champalimaud, Patricia Urquiola, Pierre Yves Rochon and André Fu
- Sleeps up to 2 people, 55 sq m / 592 sq ft

Park Junior Suites

- A haven of quietude, each Park Junior Suite features contemporary interiors by world-renowned designers Pierre-Yves Rochon, André Fu and Patricia Urquiola
- Sleeps up to 2 people, 55 sq m / 592 sq ft

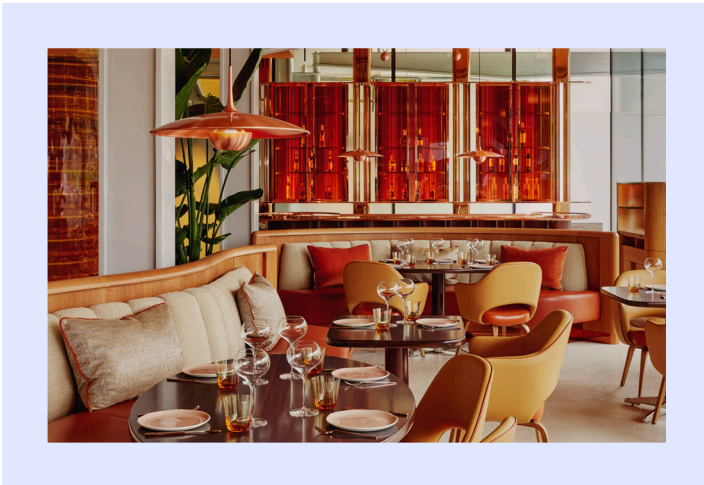


Corner Park Suite

HOTEL FACILITIES

abc kitchens

- Designed by Rémi Tessier and featuring artworks by Damien Hirst, abc kitchens at The Emory brings Chef Jean-Georges Vongerichten's acclaimed abc brand to the UK for the very first time
- Vibrant, approachable and contemporary, the restaurant's glass facade promises views of Hyde Park and Knightsbridge
- The menu brings together delicious elements from a trio of Jean-Georges' New York locations — abc kitchen, abcV and abc cocina
- The courtyard features a stunning stained glass piece by acclaimed artist, Brian Clarke, and the bar boasts mid-century inspired décor in a warm, inviting palette



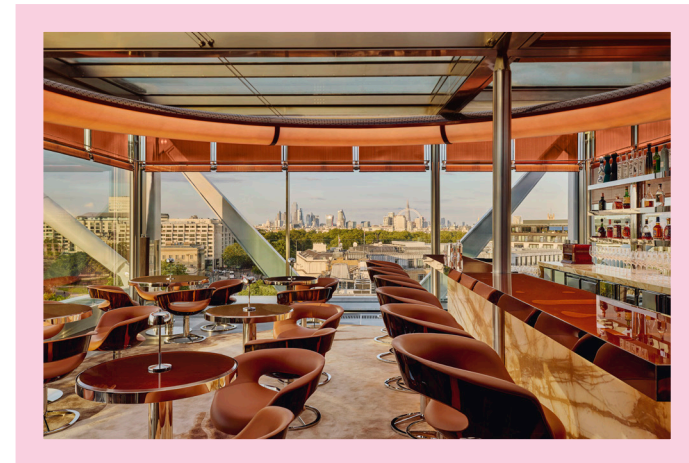
abc kitchens

The Emory Cigar Merchants

- An intimate rooftop destination open exclusively to hotel residents and their guests, The Emory Cigar Merchants is the perfect place to enjoy a relaxing drink, high above the capital
- Home to a fine collection of cigars and complete with an advanced extraction system, the interiors are the work of acclaimed designer, Rémi Tessier

The Emory Rooftop Bar

- Designed by Rémi Tessier, the bar offers striking décor and panoramic views of London's skyline await, alongside a selection of exceptionally distilled spirits, and a refined menu of light dishes.



The Emory Rooftop Bar

HOTEL FACILITIES

Surrenne

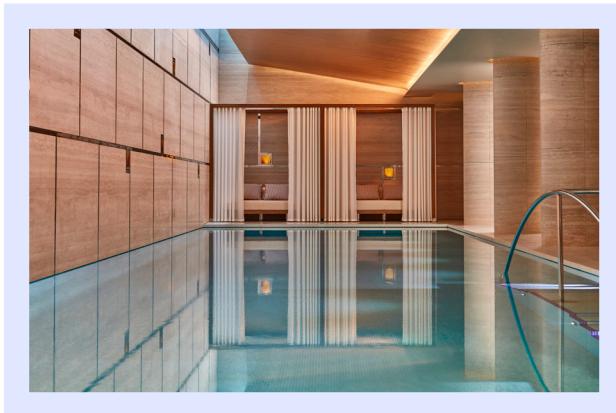
- A new paradigm of wellbeing and longevity, Surrenne is one of the largest health, fitness and beauty destinations in London
- Spread over 4 floors of our private Members' Club in Knightsbridge, it features a 22m pool, sauna, spa and treatment rooms, a state-of-the-art gym, as well as a pioneering Longevity Suite and Tracy Anderson Studio
- Spearheaded by world-leading experts and global science luminaries Dr. David Sinclair, Dr. Andrew Huberman and Dr. Shauna Shapiro, Surrenne offers modern rituals to awaken true transformation and elevate guests to a new state of being

Surrenne Fitness

- A seamless fusion of sophisticated design and state-of-the-art equipment awaits. Curated for the discerning enthusiast, Surrenne focuses on core strength and holistic wellness, resulting in peak performance and ultimate fitness optimisation

Surrenne Café

- With a menu curated by nutritionist Rose Ferguson, Surrenne Café provides a haven of relaxation to enjoy a healthy bite, smoothie or juice



Pool



Tracy Anderson Studio



Couple's Treatment Room